


A new nature-park in the Turcot yards

Enhancement of the Saint-Jacques Escarpment Ecoterritory

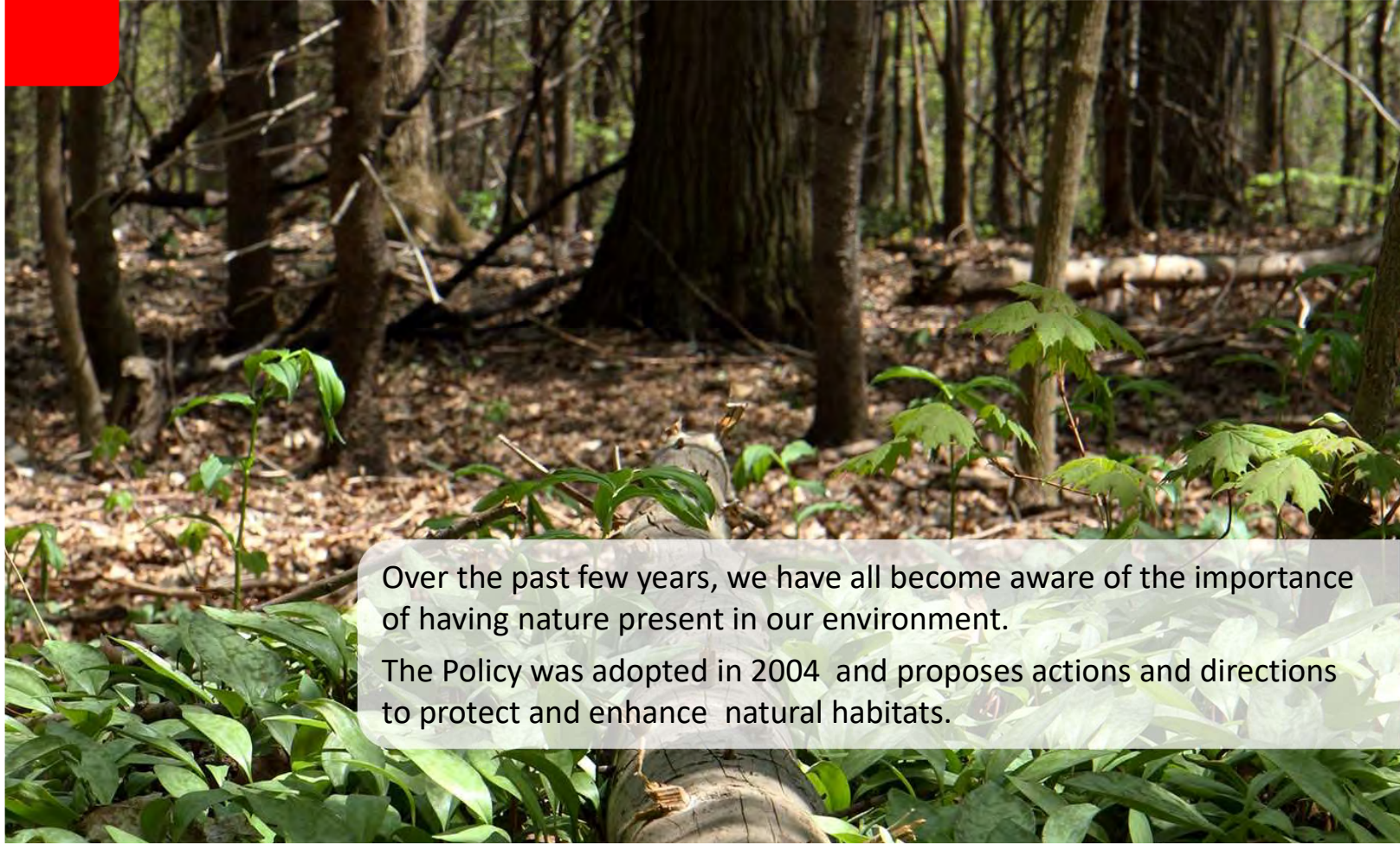
Public Consultation - Information Session
September 25, 2018

Presentation Overview

- 
- Context
 - Development Vision
 - Citizen Involvement

CONTEXT

Policy on the Protection and Enhancement of Natural Habitats



Over the past few years, we have all become aware of the importance of having nature present in our environment.

The Policy was adopted in 2004 and proposes actions and directions to protect and enhance natural habitats.

CONTEXT

Policy on the Protection and Enhancement of Natural Habitats



Creation of protected areas

Presently, the protected areas represent 6,1% of the territory.

In 2015, the Land Use and Development Plan* increased the target to 10%, or close to 2000 hectares.

*Montréal Urban Agglomeration Land Use and Development Plan

CONTEXT

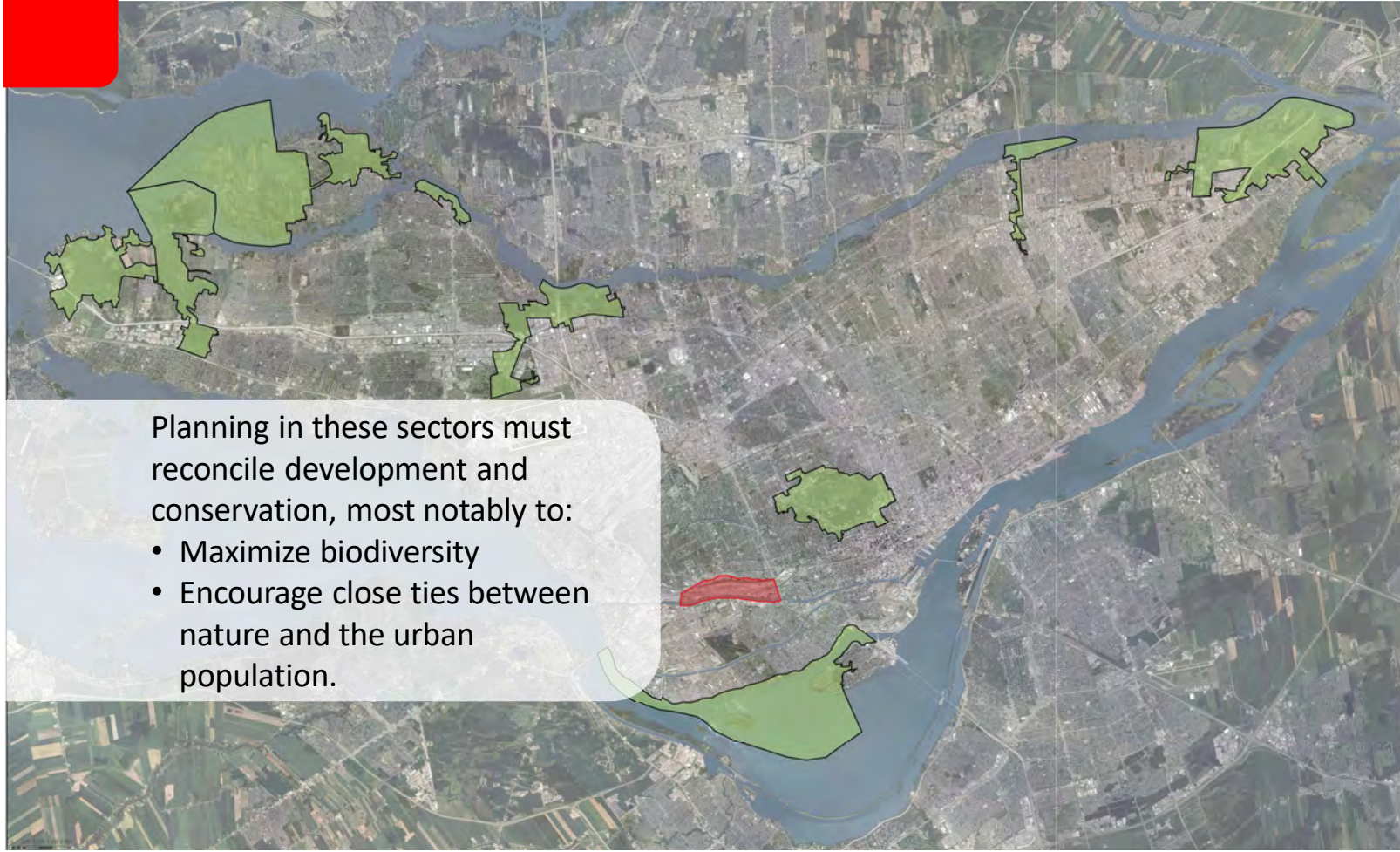
Policy on the Protection and Enhancement of Natural Habitats



Identifies 10 sectors, known as eco-territories, where the protection, value, and creation of natural areas are considered to be priorities.

CONTEXT

Policy on the Protection and Enhancement of Natural Habitats



Planning in these sectors must reconcile development and conservation, most notably to:

- Maximize biodiversity
- Encourage close ties between nature and the urban population.

CONTEXT

Policy on the Protection and Enhancement of Natural Habitats

The Saint-Jacques Escarpment Ecoterritory is one of the 10 sectors.



CONTEXT

Saint-Jacques Escarpment Ecoterritory



CONTEXT

Saint-Jacques Escarpment Ecoterritory



rue Saint-Jacques

Saint-Jacques Escarpment



Photo 2013

CONTEXT

The Turcot Project



The work being completed by the Ministry is bringing several changes to the ecoterritory.

CONTEXT

The Turcot Project



Moving the railway tracks to the north

CONTEXT

The Turcot Project



Creation of a green strip at the foot of the escarpment:

- To create a buffer zone to enhance the natural environment of the escarpment
- To create wildlife habitat to encourage biodiversity

CONTEXT

The Turcot Project

This green strip will include:

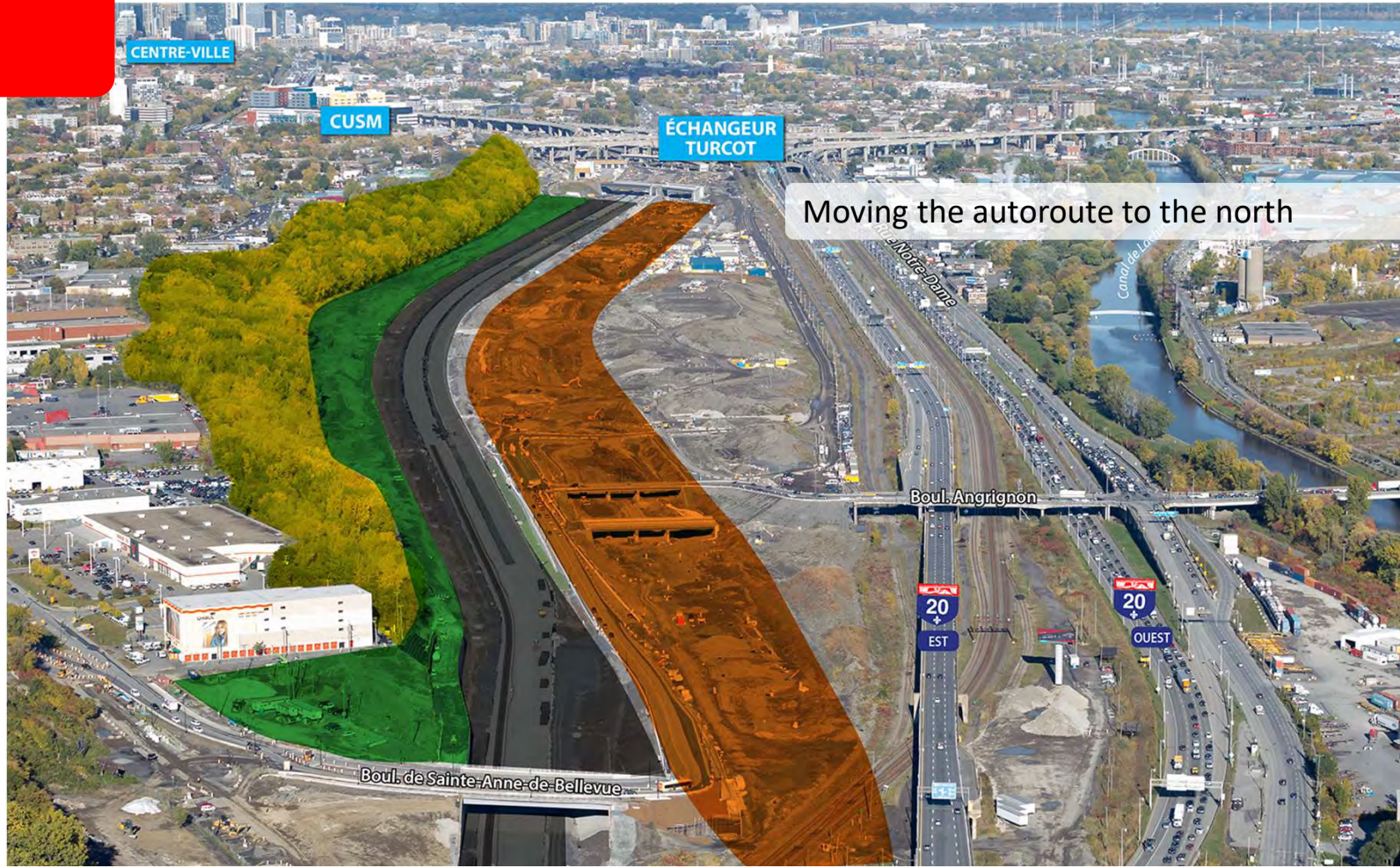
- Different types of natural settings (pond, prairie, woods)
- A multi-purpose trail for walking and cycling

The Ministry consulted citizens on this project last March



CONTEXT

The Turcot Project



CONTEXT

The Turcot Project



Greening along the autoroute:

- Mounds planted with trees to the south of the autoroute
- Creation of a green entranceway to the city.

CONTEXT

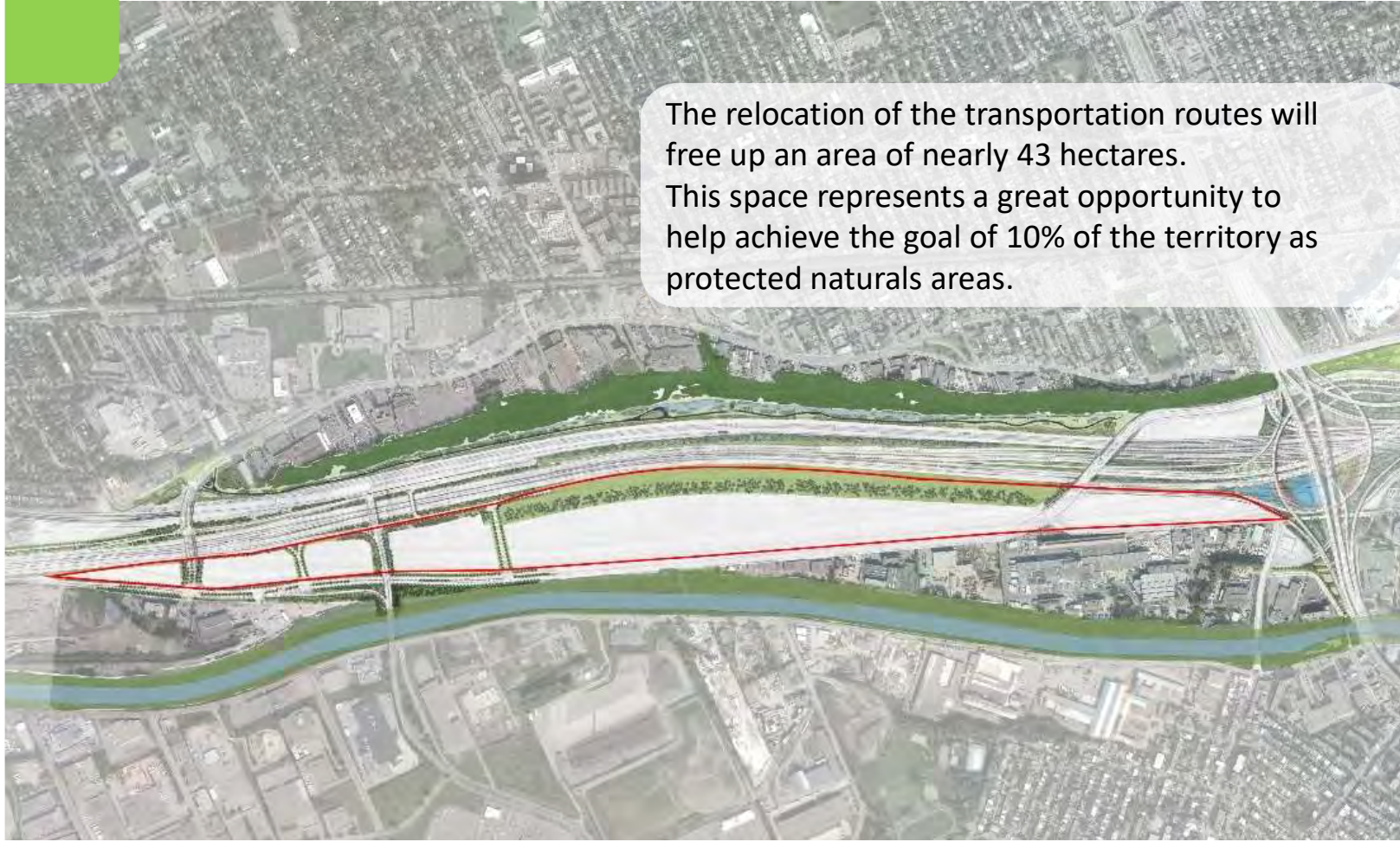
The Turcot Project



Enhancement of the local road network:

- Creation of new urban boulevards lined with trees, sidewalks and cycling paths.
- Begin the transformation of rue Notre-Dame which will be completed by the Ville de Montréal.

The Saint-Jacques Escarpment Ecoterritory after Turcot



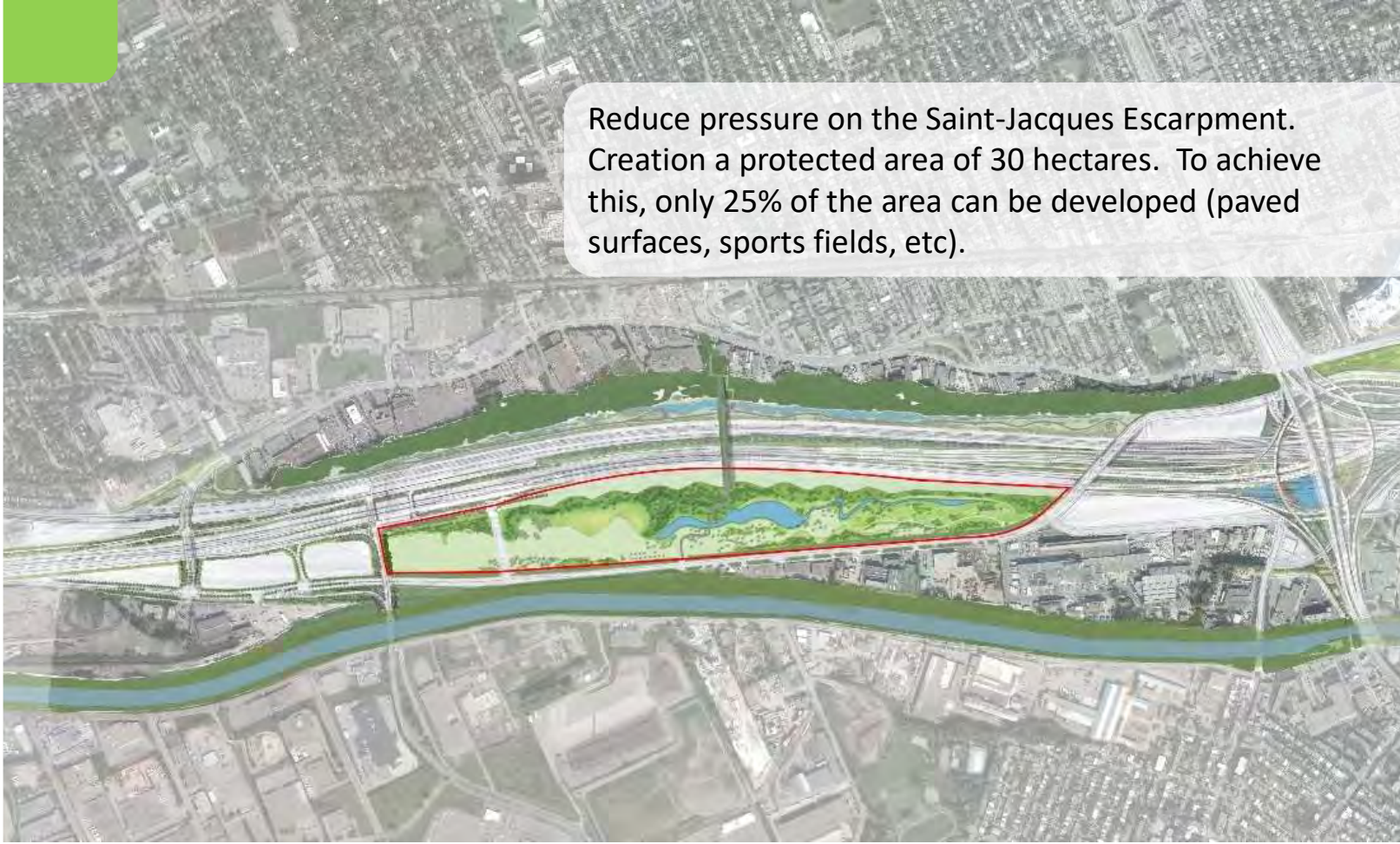
The relocation of the transportation routes will free up an area of nearly 43 hectares. This space represents a great opportunity to help achieve the goal of 10% of the territory as protected natural areas.

Creation of a New Nature-Park

The Ville de Montréal propose to develop a 30 hectare nature-park. The challenge will be in converting a former rail yard and autoroute into a new green space.



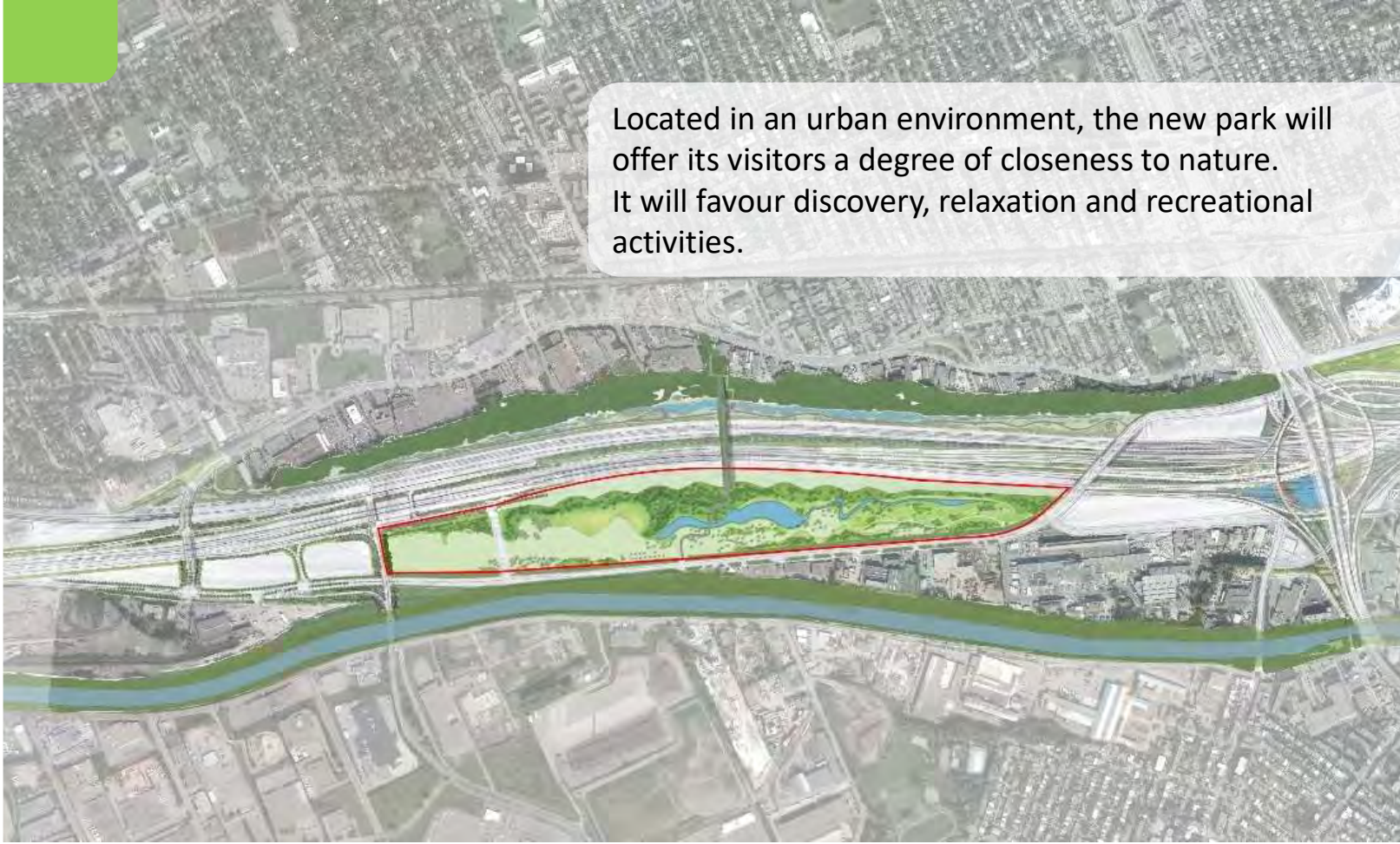
Creation of a New Nature-Park

An aerial photograph of a city, likely Montreal, showing a river (the Saint-Jacques River) flowing through it. A large area of land, outlined in red, is highlighted in green, indicating a proposed nature park. The area is situated between the river and a major highway interchange. The surrounding city is densely packed with buildings and streets.

Reduce pressure on the Saint-Jacques Escarpment. Creation a protected area of 30 hectares. To achieve this, only 25% of the area can be developed (paved surfaces, sports fields, etc).

DEVELOPMENT VISION

Creation of a New Nature-Park

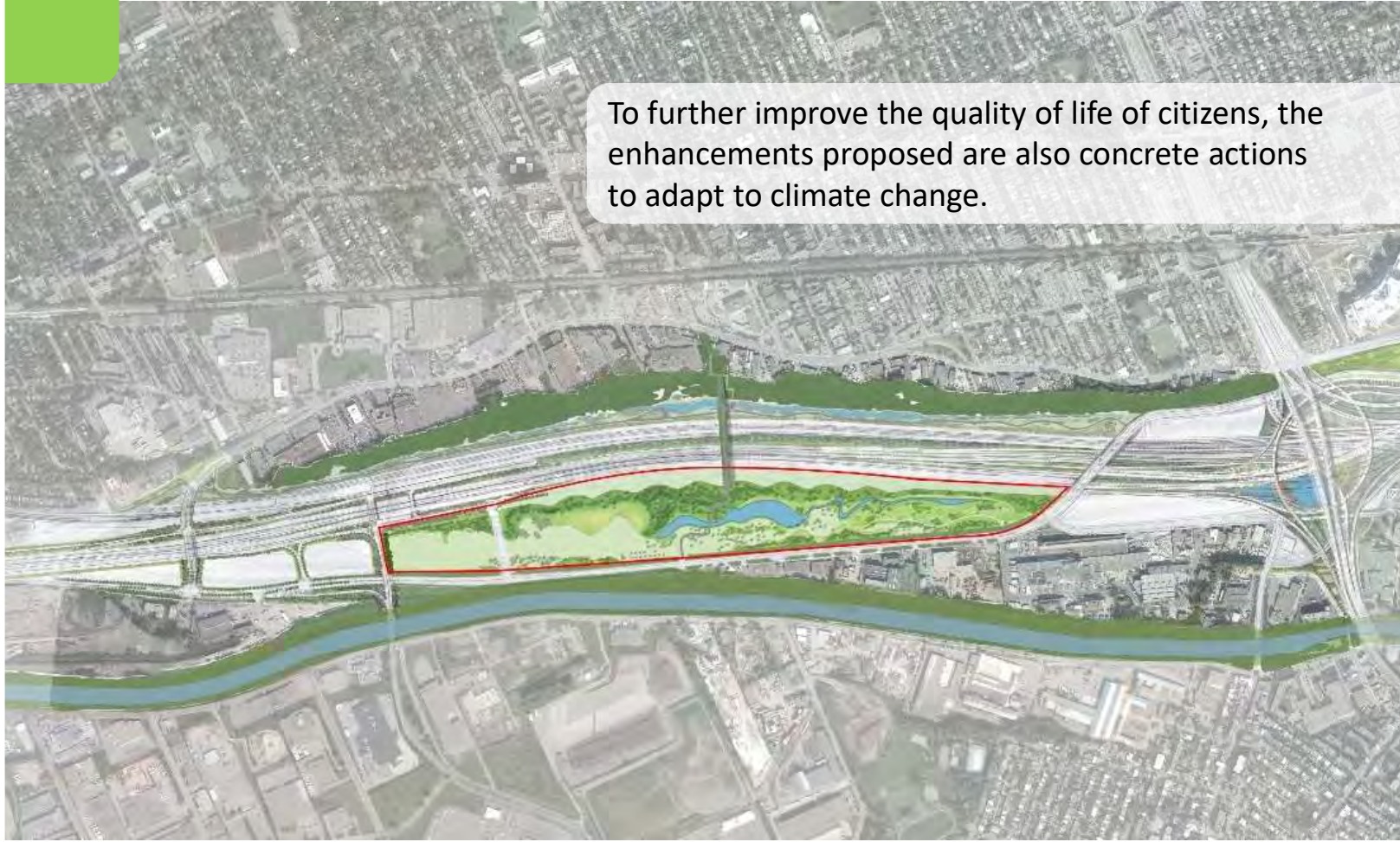
An aerial photograph of an urban environment, showing a dense grid of buildings and streets. A river flows through the center of the image. A large, irregularly shaped area in the middle of the river is highlighted in green and red, indicating the proposed location for a new nature park. The surrounding urban area is shown in grayscale, while the park area is in color. A semi-transparent white box with a red border is overlaid on the right side of the image, containing text.

Located in an urban environment, the new park will offer its visitors a degree of closeness to nature. It will favour discovery, relaxation and recreational activities.

DEVELOPMENT VISION

Creation of a New Nature-Park

To further improve the quality of life of citizens, the enhancements proposed are also concrete actions to adapt to climate change.



Creation of a New Nature-Park

Comparables:

- Parc La Fontaine: 34 hectares
- Parc Jarry: 35 hectares
- Parc-nature de l'Île-de-la-Visitation: 32 hectares



Principal Components of the New Nature-Park

Woods



The wooded areas will allow for:

- Creation of cool areas
- Increased vegetation cover (canopy)
- Increased biodiversity
- Improved air quality
- Improved neighbourhood life



Principal Components of the New Nature-Park

Prairie



The prairie areas will allow for:

- Wildlife habitat that is becoming more and more rare in Montréal
- Increased biodiversity
- Slowing of stormwater runoff and increasing its infiltration into the ground



Principal Components of the New Nature-Park

Water



The wetlands areas will allow for:

- Directing stormwater towards a water body to avoid a surcharge of the sewer system
- A reminder of “lac à la Loutre” and the “rivière Saint-Pierre” that once occupied the site
- Increasing biodiversity
- Creation of a significant attraction on the landscape



Principal Components of the New Nature-Park

Modulations



The modulations will allow for:

- Using the excess compressible soils from the Turcot project while enhancing the landscaping of the park (level of contamination compatible with use as a park)
- Diversifying the landscape
- Creation of a variety of view points
- Diverse activities (e.g. mountain bike trails, tobogganing)



Principal Components of the New Nature-Park

North-South Link



The North-South Link for pedestrians and cyclists will allow for:

- Extend the park over Autoroute 20 and the railway tracks to join the green strip
- Mark the entranceway to the Ville de Montréal
- Facilitate and encourage active transportation in the area



Principal Components of the New Nature-Park

North-South Link

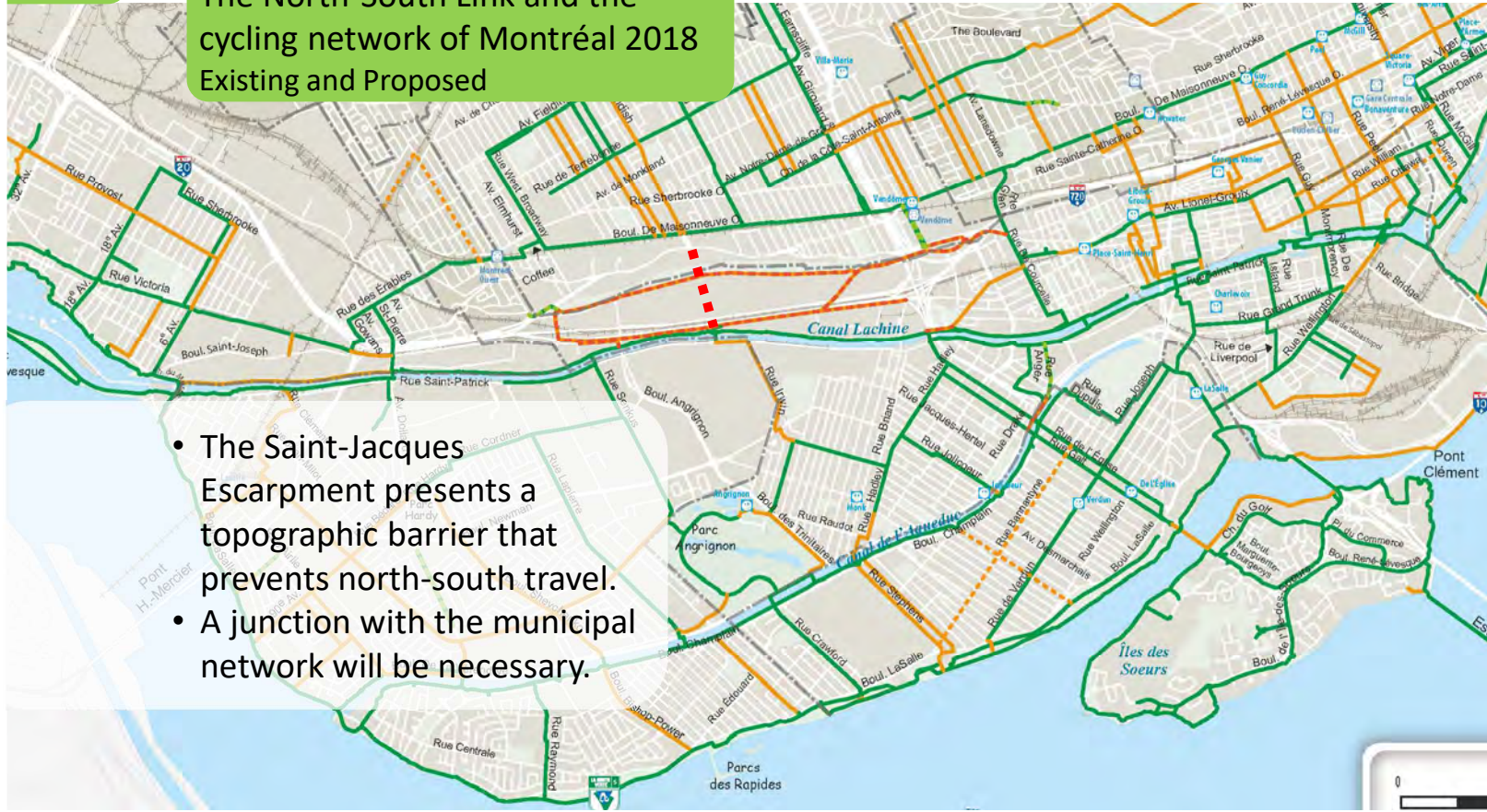


This link will allow connections between:

- | | | |
|------------------|---|------------------------------|
| <i>Structure</i> | } | A. Top of the escarpment |
| | | B. Green link below |
| | | C. Nature-park |
| <i>Path</i> | } | D. Municipal cycling network |
| | | E. Canal de Lachine |

Proposal for a New North-South Link

The North-South Link and the cycling network of Montréal 2018 Existing and Proposed



- The Saint-Jacques Escarpment presents a topographic barrier that prevents north-south travel.
- A junction with the municipal network will be necessary.

Your Expectations

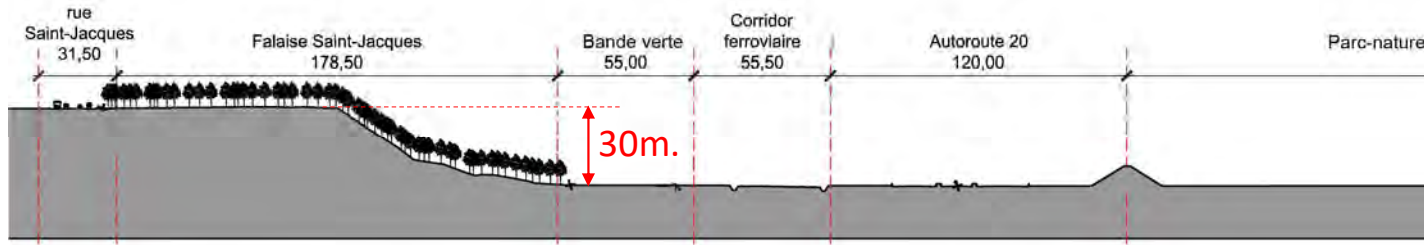
North-South Link



Certain orientations will have a significant impact on its feasibility, mainly the willingness to create a direct transit link.

The crossing of the escarpment, measuring nearly 30 meters high represents a major challenge.

In order to guide the evaluation of the feasibility of this link, the Ville de Montréal wishes to know your expectations regarding this link.



CITIZEN INVOLVEMENT

Your Expectations



The proposed developments will create an environment ideal for escape and discovery of nature.

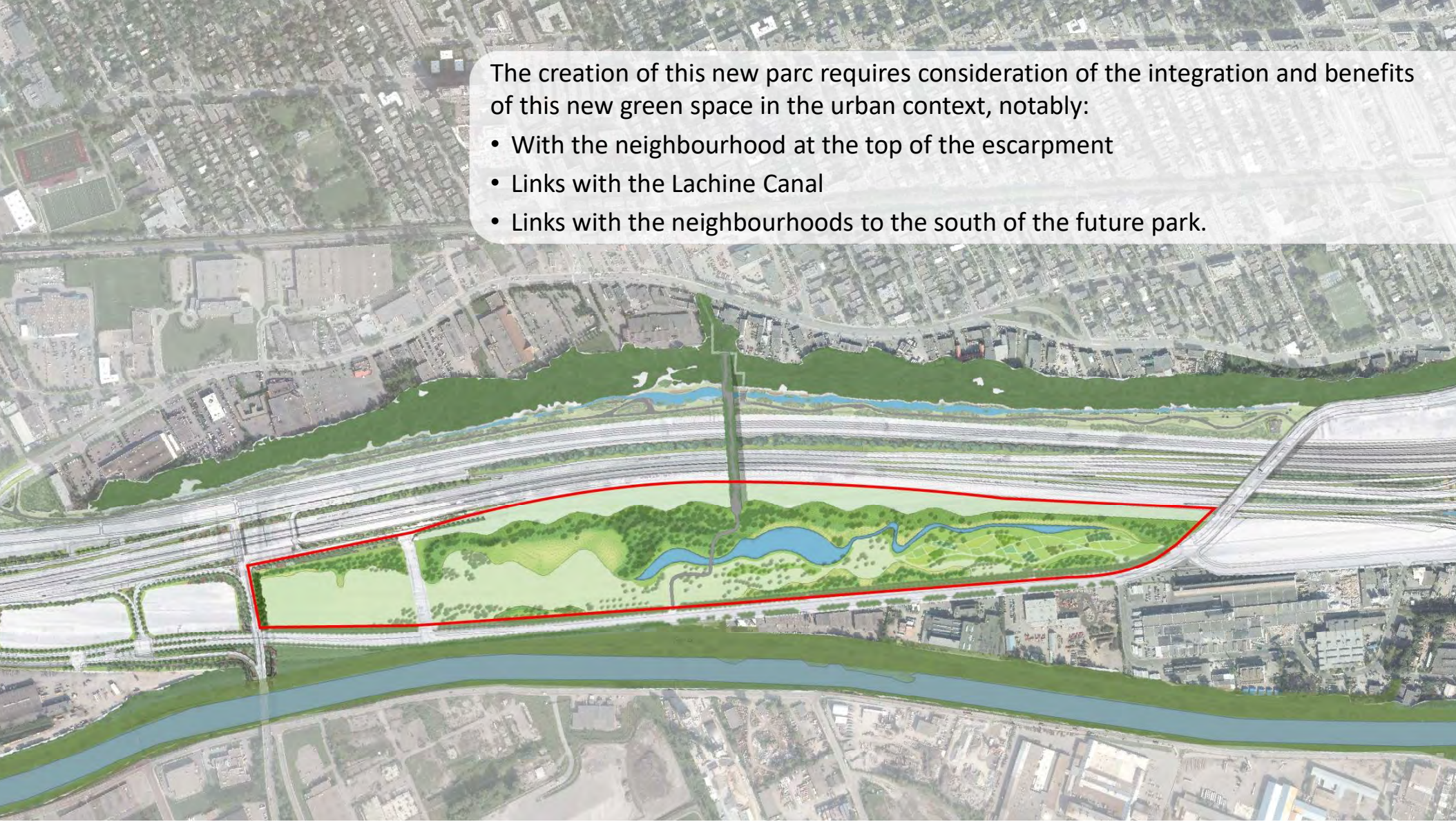
A network of trails for pedestrians, runners, cyclists or skiers for leisure and physical activity.

In order to create a project that reflects you and responds to your needs, the Ville de Montréal wishes to know your expectations relative to the project.



The North-South Link will allow for a connection between the new nature-park, the Saint-Jacques Escarpment and the green strip. In total, these green spaces will total an area of 60 hectares.

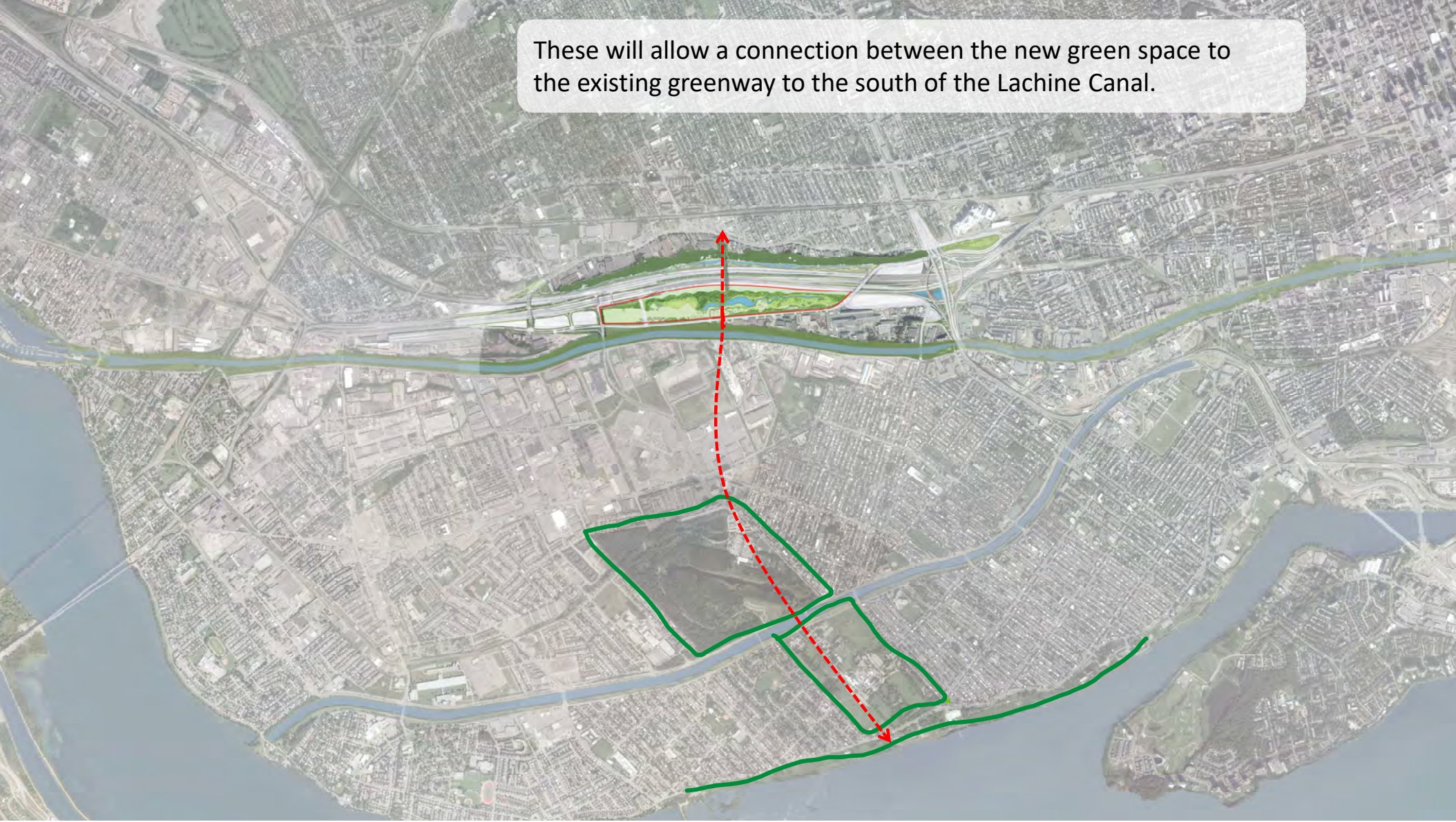





The creation of this new parc requires consideration of the integration and benefits of this new green space in the urban context, notably:

- With the neighbourhood at the top of the escarpment
- Links with the Lachine Canal
- Links with the neighbourhoods to the south of the future park.

These will allow a connection between the new green space to the existing greenway to the south of the Lachine Canal.





In order to create a project that reflects you and responds to your needs, the Ville de Montréal wishes to know your expectations.

Thank you in advance for your collaboration.

Now, we want to hear from you...