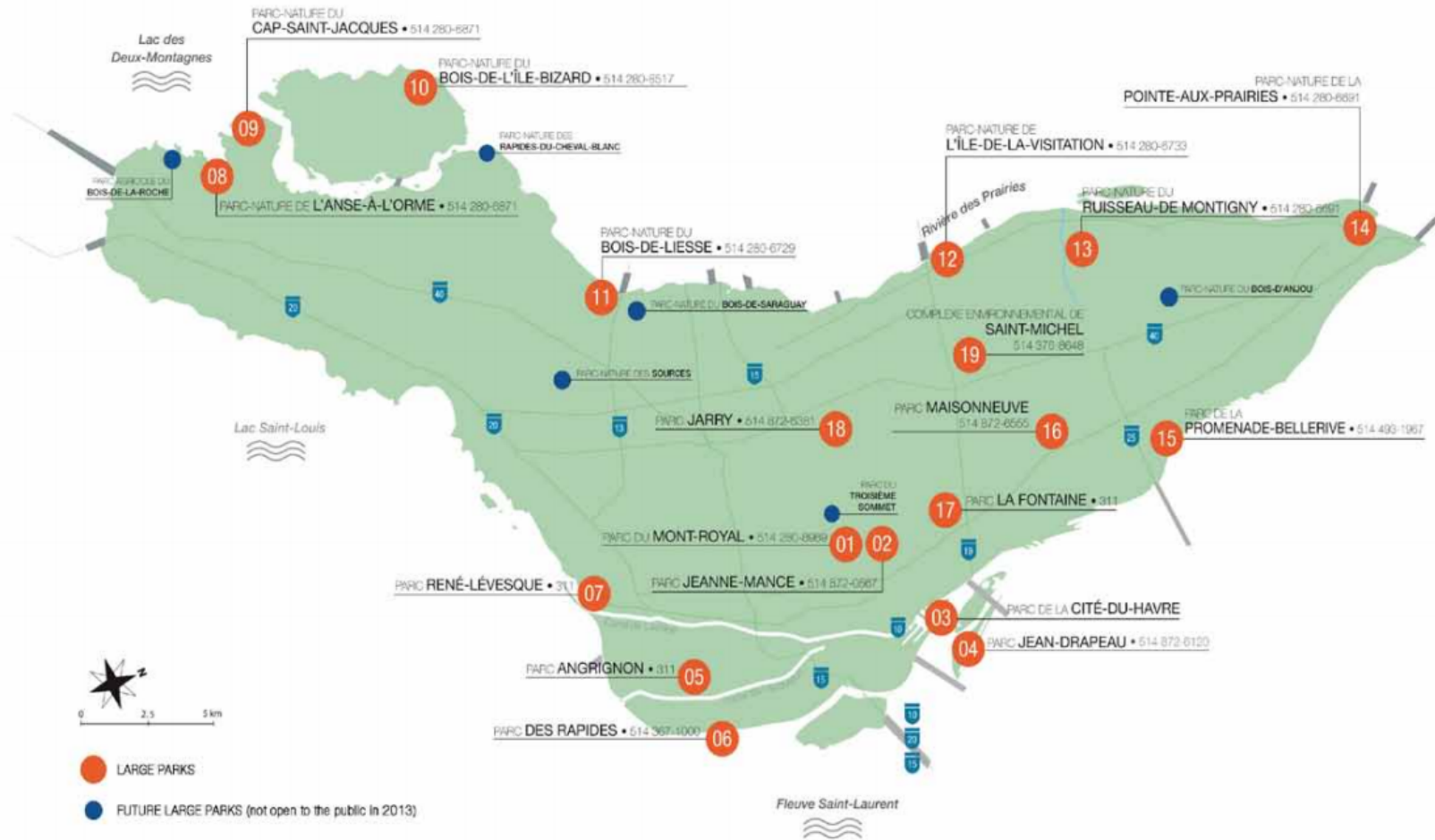


Presentation to OCPM June 9

- Gary Spiller MSc Ecologist

Montreal Protected Areas



Anse à l'Orme Protected Area

LAND IN QUESTION: CLEARED FOR DEVELOPMENT, OR SAVED FOR CONSERVATION?



Drawing by city of Montreal dated August 2006 identifying strip of land owned by Manchester Brighton/Uni-Dev (in red), which is inside of the conservation zone (outlined in white) to be acquired by the city for the eco-territory.

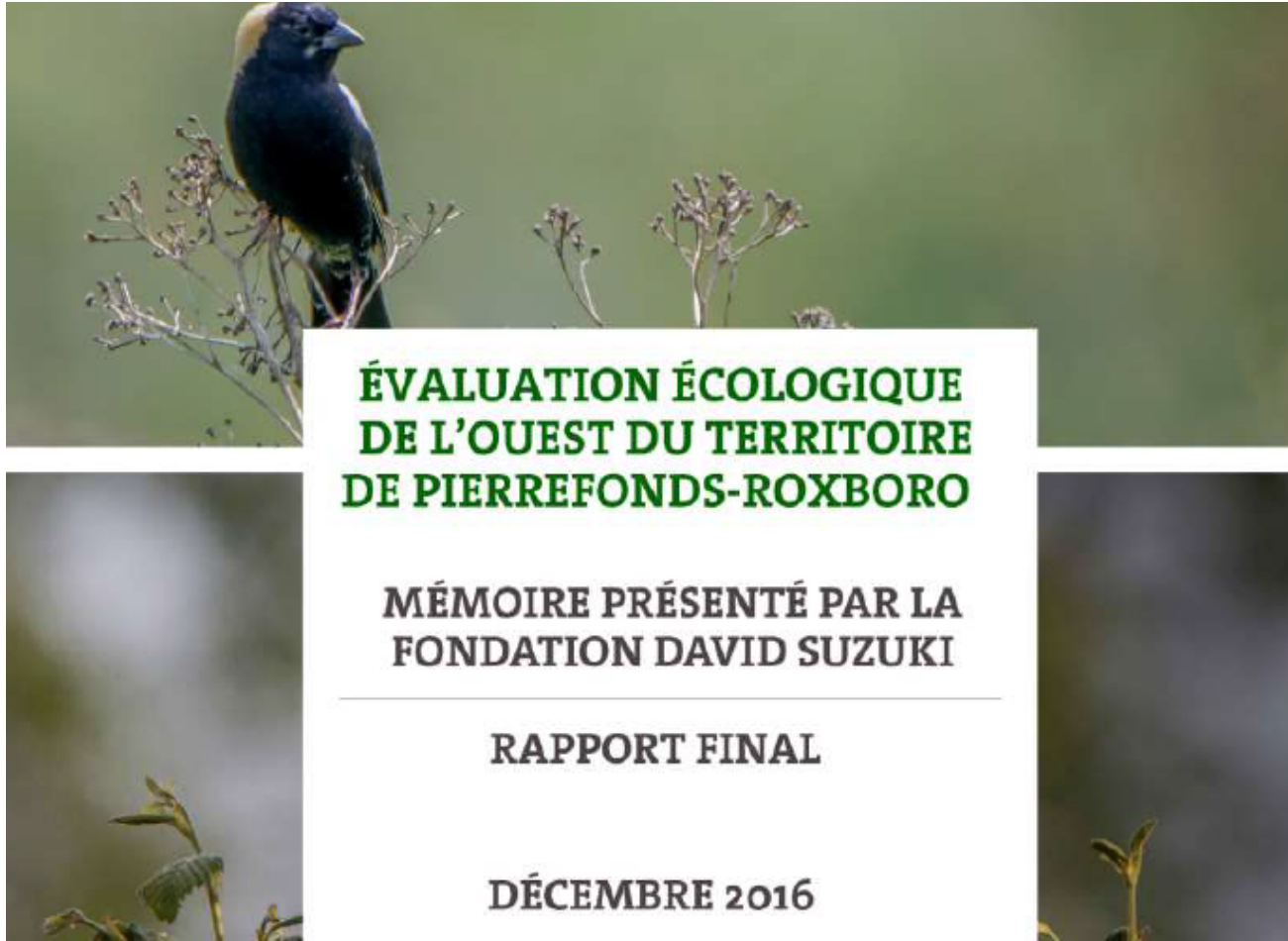


Map of protected territories ("aires protégées") on the island of Montreal in the city's land-use plan, adopted by Montreal city council in January 2015. It shows the strip of land belonging to Manchester Brighton/Uni-Dev (above and below the river) not conserved and not in the process of being conserved.

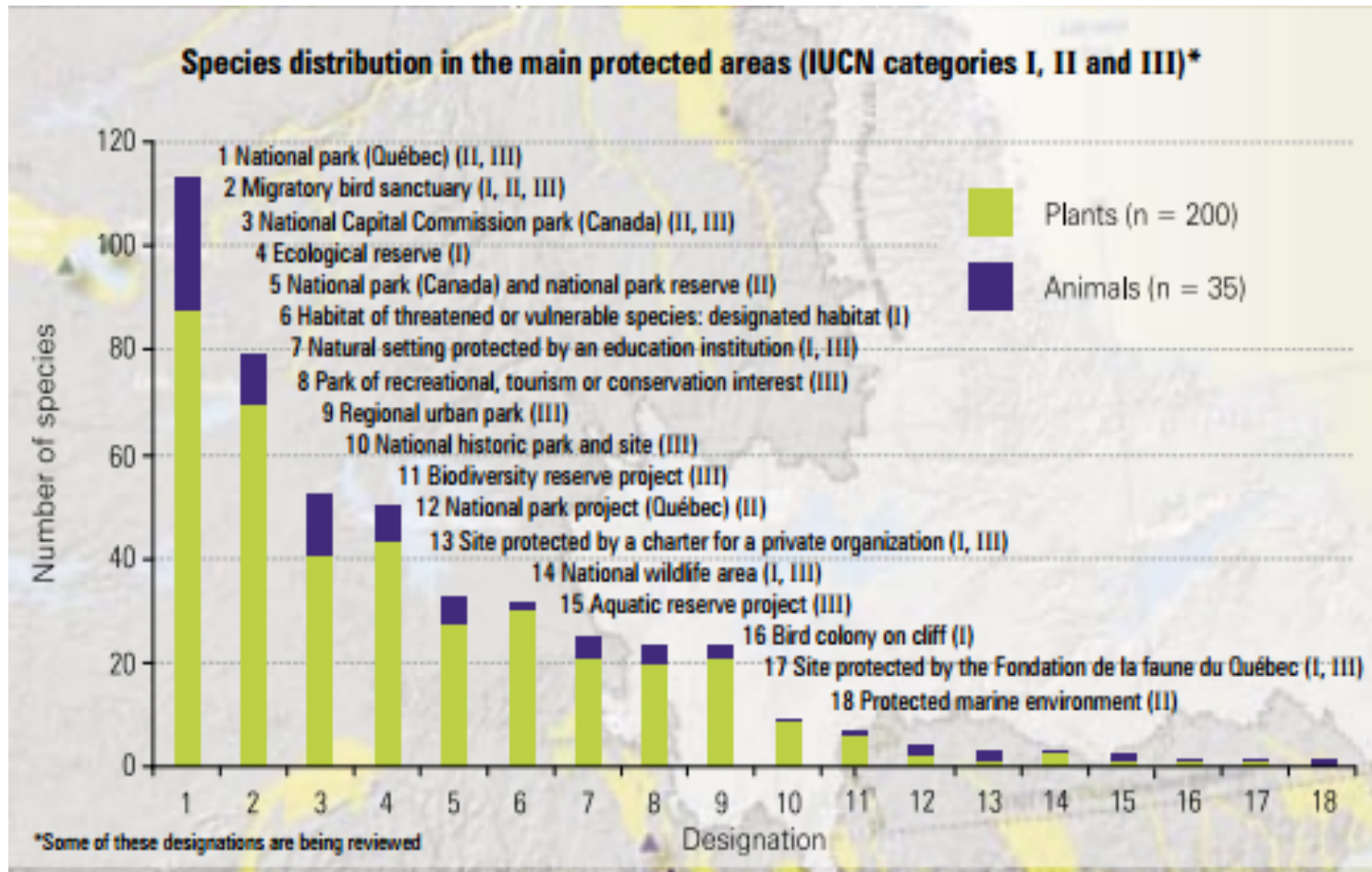


Map of land uses ("grandes affectations du territoire") on the island of Montreal in the city's land-use plan, adopted by Montreal city council in January 2015. It shows the portion of land belonging to Manchester Brighton/Uni-Dev (above the river) as marked for residential development (in yellow). The portion below the river is slated for conservation (in green). The portion below the river has had protected agricultural zoning from the province since 1978.

Biodiversity Study



Biodiversity Conservation

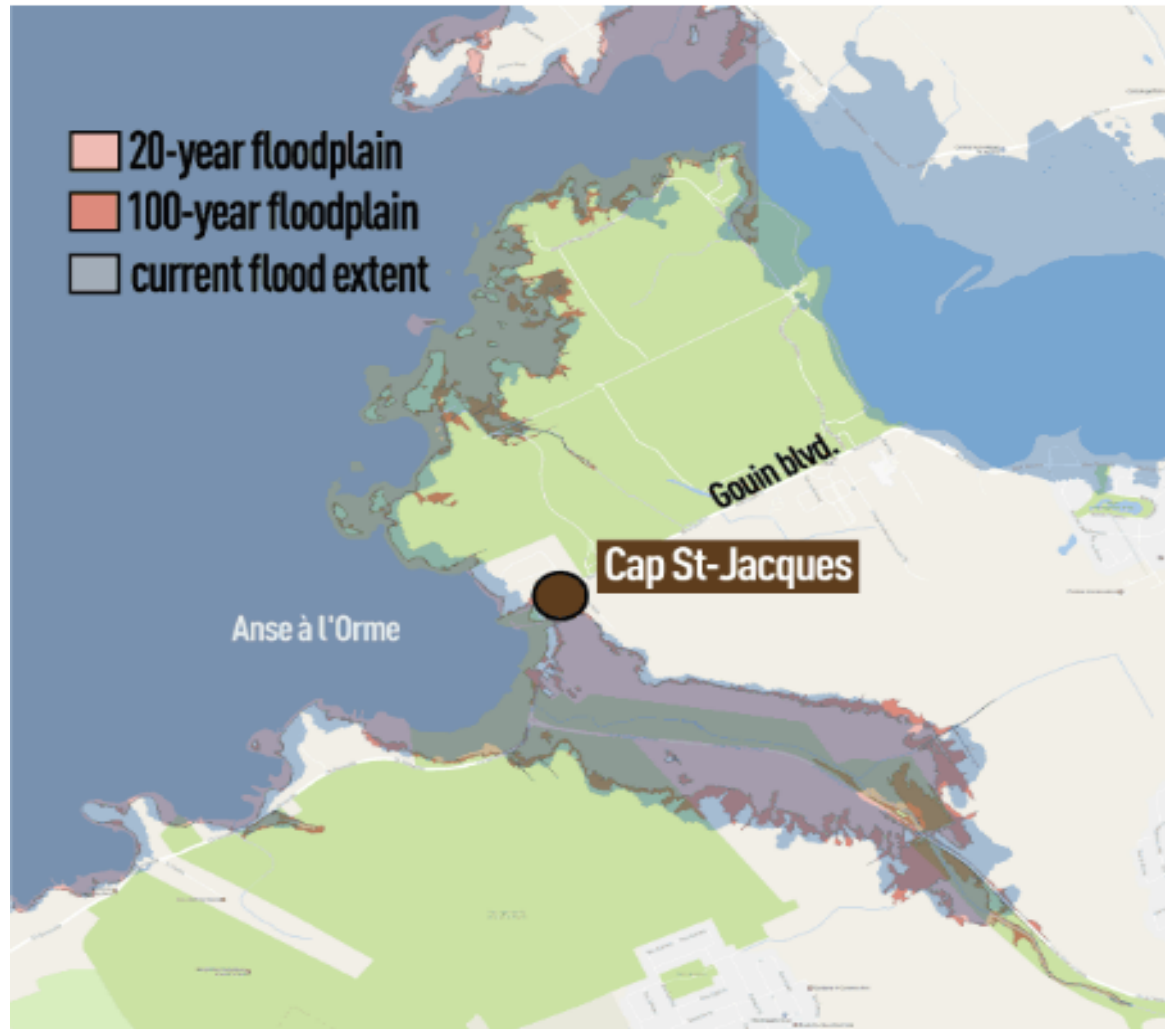


Papineau land 6000 ha conserved

Un contexte extraordinaire de conservation

Le territoire de Kenauk est majoritairement recouvert de forêts. Plusieurs espèces rares au Québec s'y trouvent, ainsi que de très belles forêts d'érable noir, une espèce vulnérable selon la Loi sur les espèces menacées ou vulnérables du Québec (LEMV).

Flood Plain



10 owl species: Great grey owl



Protection of vulnerable species

Québec 

© Éditeur officiel du Québec

À jour au 1^{er} mars 2017
Ce document a valeur officielle.

chapitre E-12.01

LOI SUR LES ESPÈCES MENACÉES OU VULNÉRABLES

TABLE DES MATIÈRES

SECTION I	
APPLICATION.....	1
SECTION II	
RESPONSABILITÉS ET POUVOIRS.....	6
SECTION III	
DÉSIGNATION DES ESPÈCES MENACÉES OU VULNÉRABLES ET IDENTIFICATION DE LEURS HABITATS.....	9
SECTION IV	
ACTIVITÉS AFFECTANT UNE ESPÈCE FLORISTIQUE MENACÉE OU VULNÉRABLE OU SON HABITAT.....	16
SECTION V	
INSPECTION, SAISIE, CONFISCATION ET ARRESTATION.....	27

Recommendations

- Recommendations
- 1. Respect the entire 400 ha area as protected
- 2. Change the zoning to reflect this
- 3. Development should take place on brownfields (eg 43 ha Blue Bonnets Decarie)
- 4. Recognize Anse a l'Orme for its uniqueness and high biodiversity (270 species -170 birds, 100 plants and animals)