

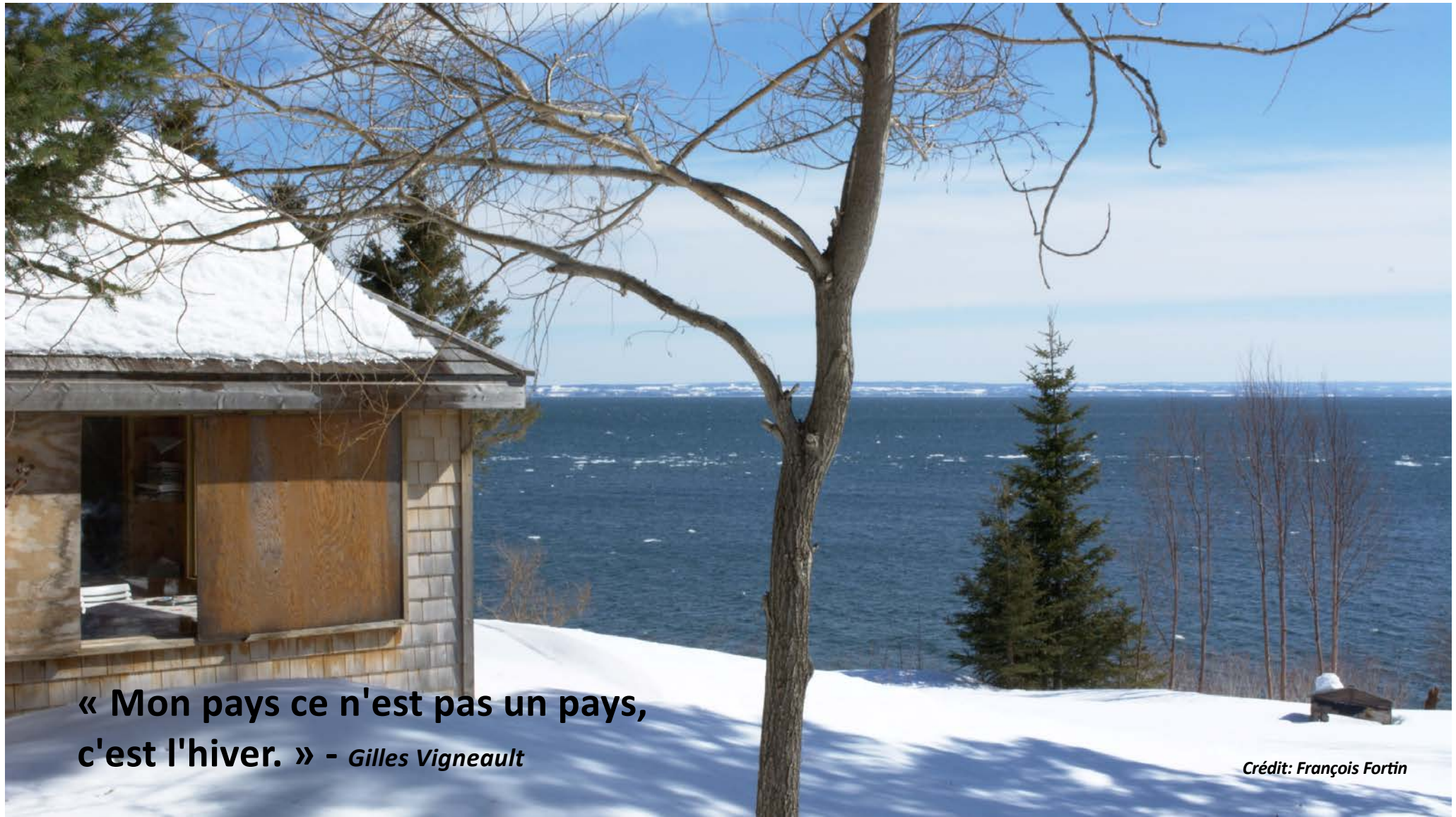


CONCEVOIR AUJOURD'HUI LA VILLE DE DEMAIN

# Vivre l'hiver dans un écoquartier

Présenté par  
**Louis Mazerolle**,  
urbaniste – designer urbain  
L'Atelier Urbain

Forum citoyen Namur-Hippodrome  
Montréal  
23 janvier 2020



**« Mon pays ce n'est pas un pays,  
c'est l'hiver. » - Gilles Vigneault**

*Crédit: François Fortin*





**Exemples de lieux misant sur la nordicité pour attirer des gens et touristes**







# WINTER CITY DESIGN GUIDELINES



URBANSYSTEMS.

February 2000

Source: Fort St. John Winter City Guidelines



wintercity  
Edmonton

# Winter Design Guidelines

Transforming Edmonton into a Great Winter City

Edmonton

December 2015

Source: Edmonton Winter City Design Guidelines

**LUMIÈRE**



Source: photocase.de

**CONFORT**



Source: rapidcityjournal.com

# Principaux enjeux de la nordicité dans l'aménagement

**ANIMATION**



Source: hellotalalay.blogspot.com

**ENTRETIEN**



Source: emaze.com

## Enjeux hivernaux

*LUMIÈRE*

*CONFORT*

*ANIMATION*

*ENTRETIEN*

## Recommandations

**1**

Planifier un quartier compact et mixte

**2**

Connecter et perméabiliser le réseau piétonnier

**3**

Intégrer la lumière

**4**

Adapter la végétation

**5**

Créer des barrières contre le vent

**6**

Ajouter de la chaleur

**7**

Programmer l'espace public

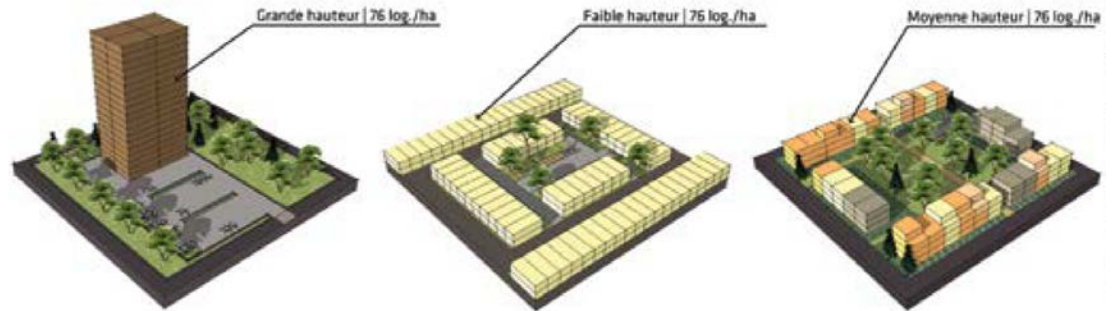


# 1

## Planifier un quartier compact et mixte



La densité à échelle humaine, possible par la compacité



■ Maison individuelle
 ■ Plex
 ■ Walk up
 ■ Tour d'habitation

Source: Vivre en ville

### Suburban City's Annual Cost, per Household



### Urban City's Annual Cost, per Household

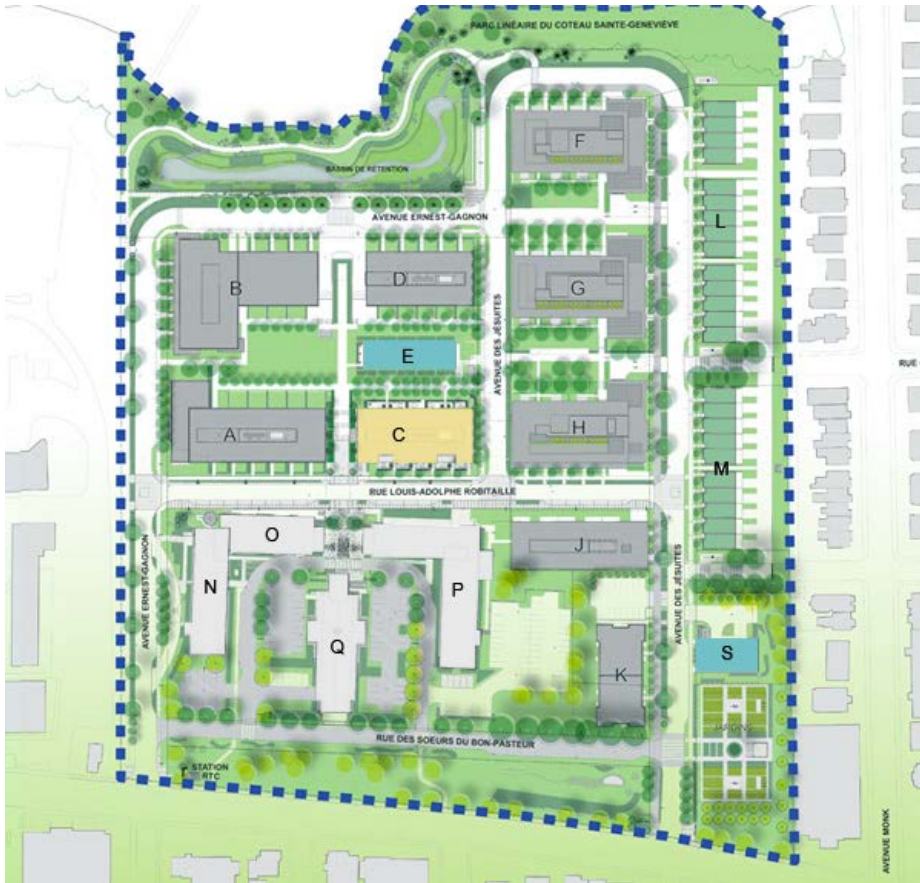


SP Sustainable Prosperity  
For more data and more reports, visit [thesustainablecity.com](http://thesustainablecity.com)  
Data based on realtor, Regional Municipality

Source: Sustainable Prosperity Institute



Source: Vivre en ville



Source: SSQ

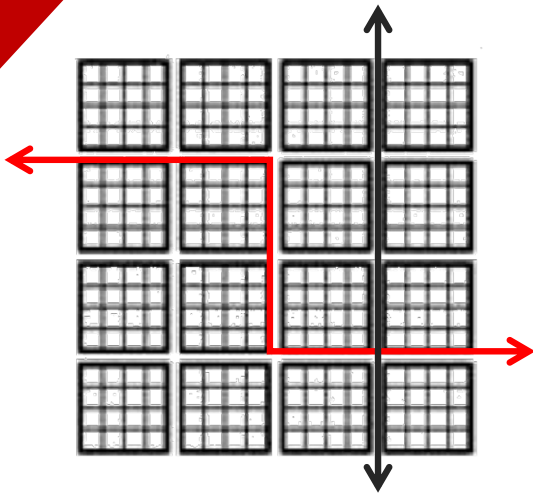


Source: Ville de Québec, PPU Entrée de Ville Saint-Roch



# 2

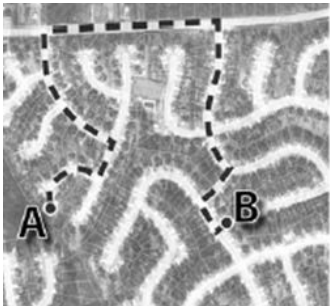
## Connecter et perméabiliser le réseau piétonnier (et l'entretenir!)



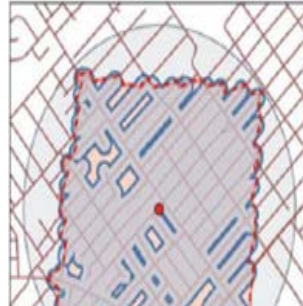
Rieselfeld et Vauban (Freiburg, Allemagne): des quartiers plus faciles à traverser pour les piétons que pour les voitures



Source: Vivre en ville



Source: evalanxmeer.wordpress.com



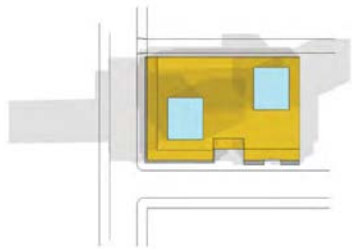
Source: researchgate.net



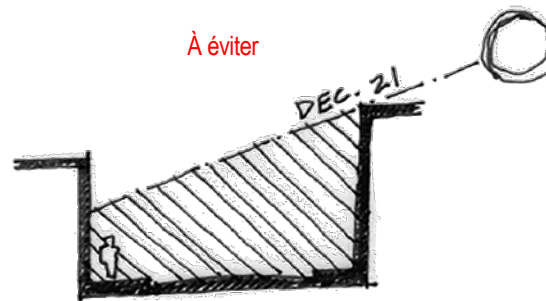
Source: ledevoir.com

# 3

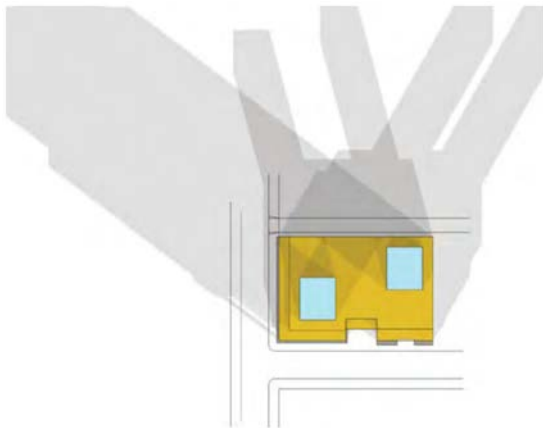
## Comment adapter la forme urbaine au climat? Intégrer la lumière



▲ Shadow Diagram: Summer Solstice 0900, 1200 and 1500 hours MST

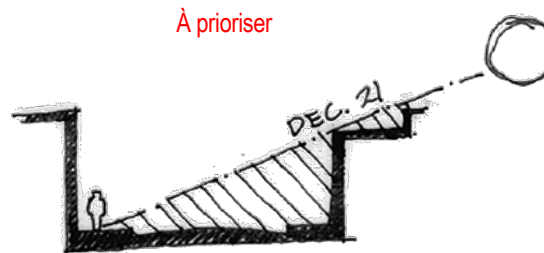


Source: Ville d'Edmonton



▲ Shadow Diagram: Winter Solstice 0900, 1200 and 1500 hours MST

Source: Ville d'Edmonton



Source: Ville de Fort St. John



Source: Pinterest



# LUMIÈRE



Source: v2com-newswire.com



Source: gezimanya.com



Source: lucemania.ch



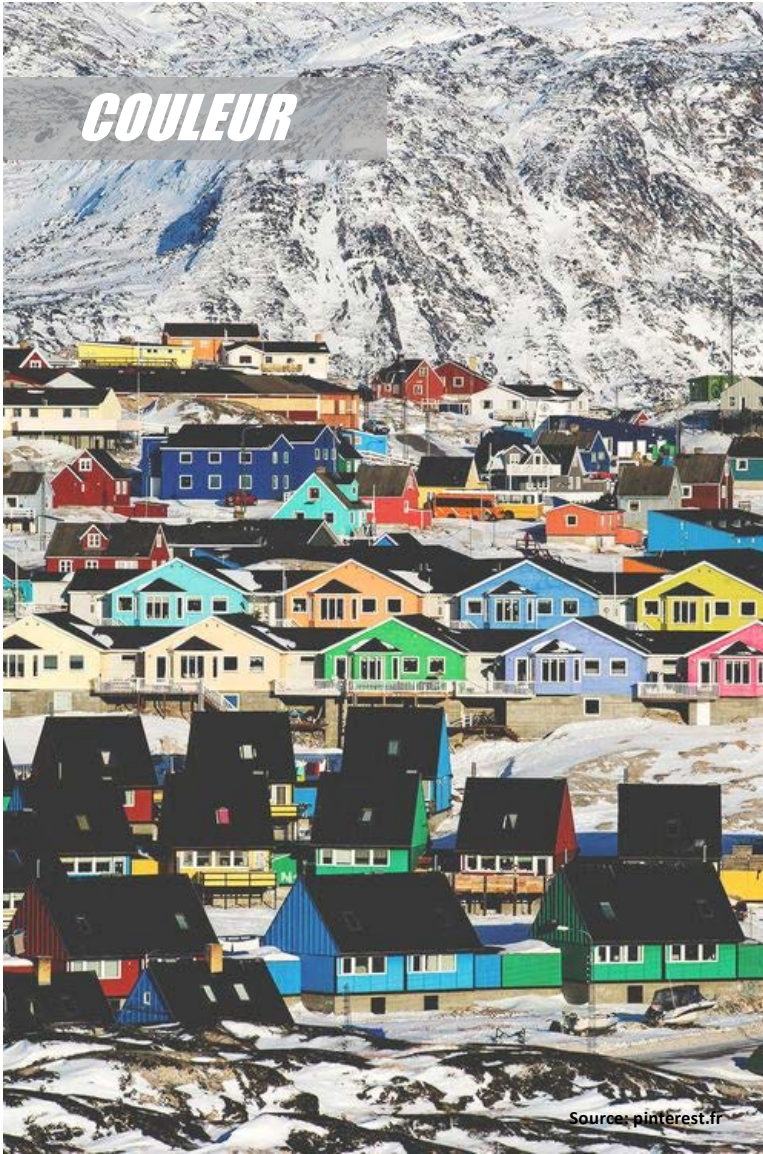
Source: spangleys.co.uk



Source: tourisme.saguenay.ca



*COULEUR*



Source: pinterest.fr



Source: flickr.com/photos/karennfld/32369137995



Source: flickr.com/photos/fibla/40851729694



# 4

## Adapter la végétation

*Les bons végétaux...*

*...aux bons endroits!*

### ARBRES FEUILLUS



*Acer ginnata*  
Érable de l'Amur



*Betula alleghaniensis*  
Bouleau jaune



*Betula papyrifera*  
Bouleau à papier



*Tilia cordata* Ronald Noftel  
Tilleul à petites feuilles 'Noftel'



*Ulmus davidiana* 'Discovery'  
Orme 'Discovery'



*Calmagrella acutiflora* 'Karl Foerster'  
Agrostide à fleur étroite



*Miscanthus sinensis* var. *purpurascens*  
Roseau de Chine

### ARBRES CONIFERES



*Larix laricina*  
Mélèze laricina



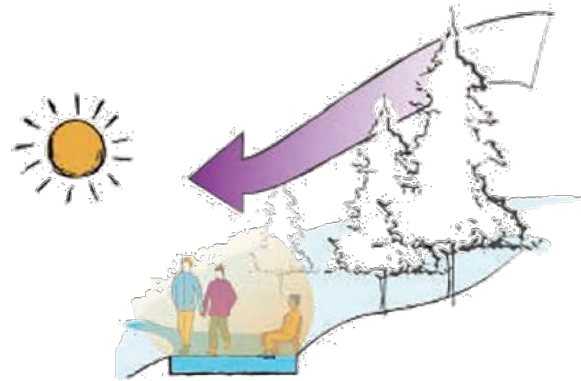
*Picea glauca*  
Épinette blanche



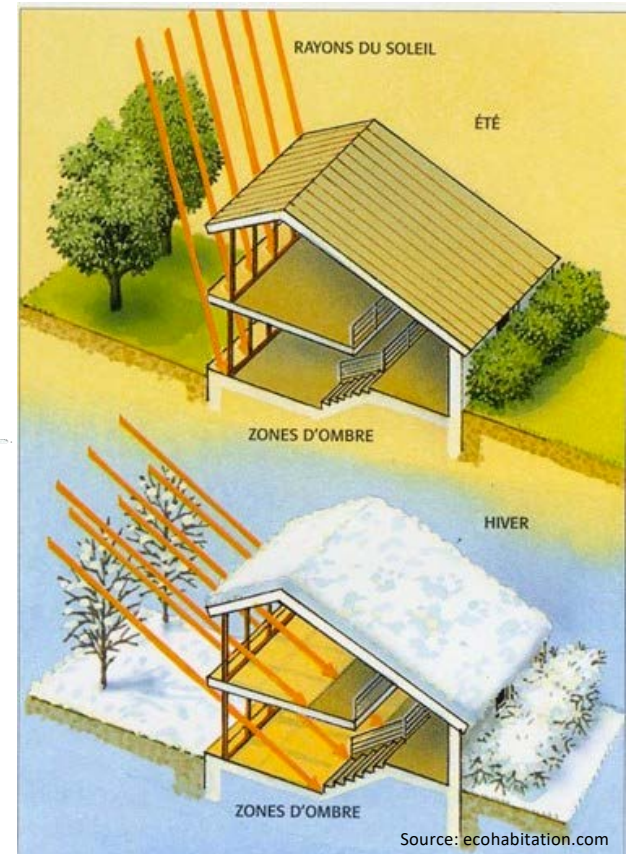
*Picea pungens*  
Épinette de Colorado



*Pinus resinosa*  
Pin rouge



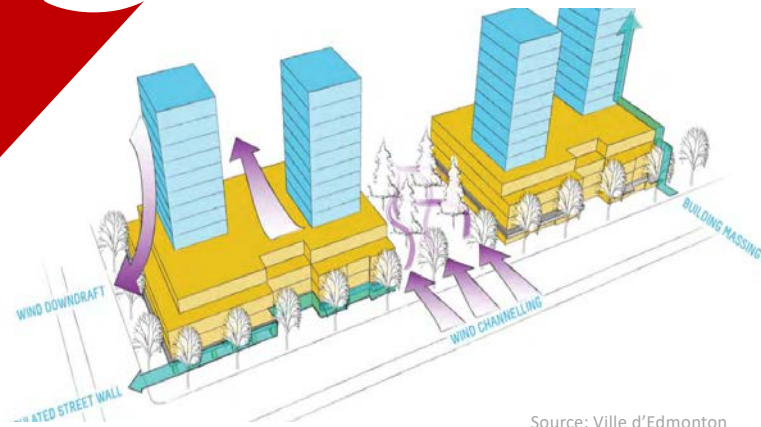
Source: Ville d'Edmonton



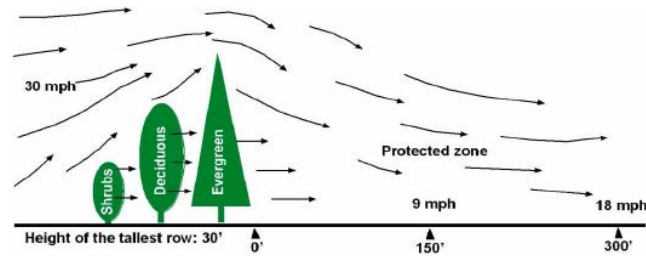
Source: ecohabitation.com

# 5

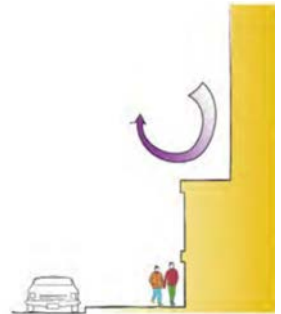
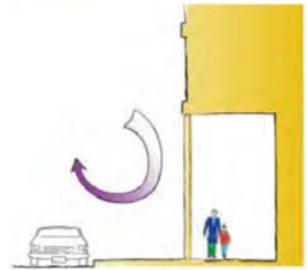
## Créer des barrières contre le vent



Source: Ville d'Edmonton



Source: researchgate.net



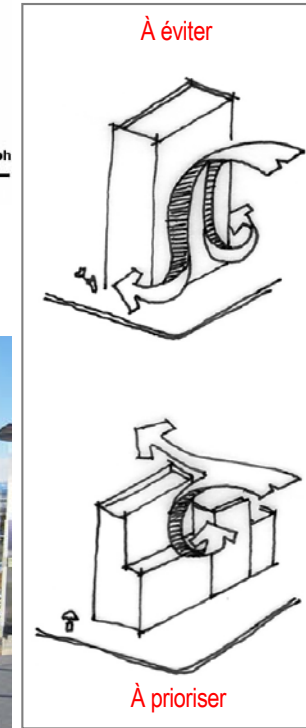
Source: Ville d'Edmonton



Source: Ville d'Edmonton



Source: edmontonrailings.ca



Source: Ville de Fort St. John

Source: Ville de Fort St. John



# 6

## Ajouter de la chaleur



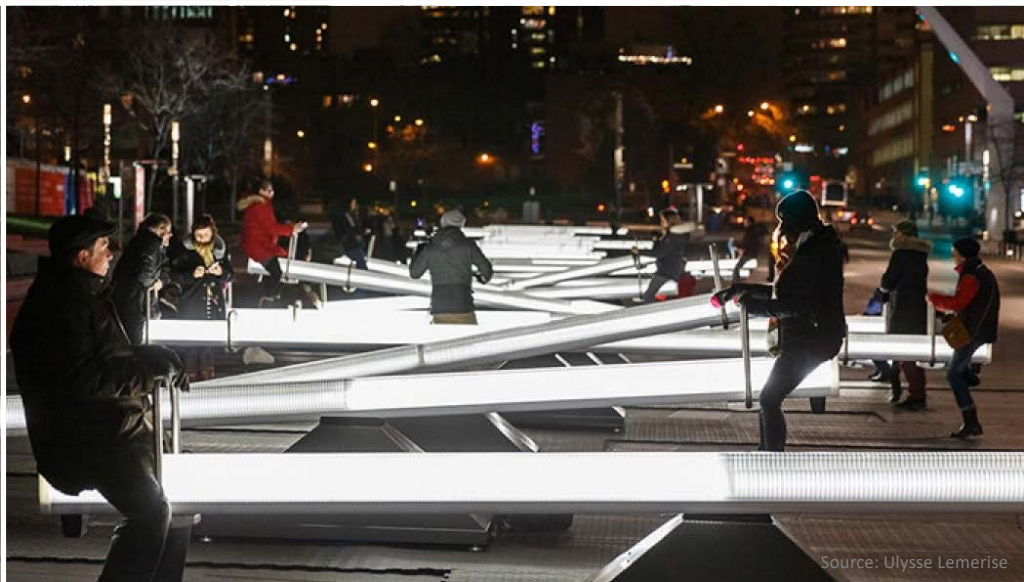


# 7

## Programmer l'espace public











Exemple



A photograph of a snowy forest. The ground is covered in a thick layer of white snow, with shadows cast by the trees. Several tall, thin trees with dark trunks stand in the foreground and middle ground. Some trees have bare branches, while others are evergreens. The background is a dense forest of similar trees under a clear blue sky.

**Merci de votre attention!**